



RIVER'S EDGE HOTEL  
PORTLAND

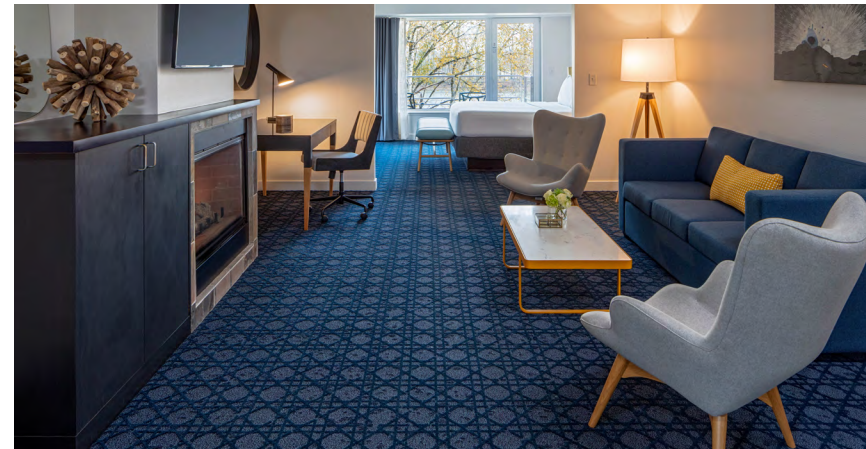


# YOUR PORTLAND ADVENTURE

Situated on a tree-lined bend of the Willamette River, just minutes from downtown Portland, River's Edge Hotel is an urban retreat rooted in warm Pacific Northwest hospitality. Relax in rooms framed by views of the river or lush surrounding hillside. Revitalize with a nourishing treatment at Portland's largest spa or catch up with friends over seasonal cuisine and local wine at Rosswood. If you're in the mood to explore, our location near the growing South Waterfront neighborhood connects you to the best of the area, from the vibrant energy of downtown to the natural beauty of the Willamette Valley.

## IN-ROOM AMENITIES

Sealy Posturepedic® Bed / Complimentary WiFi / 55" LCD TV / Premium Cable / Alarm Clock / Green Natūra Bath Amenities / Robe & Slippers / Hair Dryer / Keurig™ Coffee Maker / Iron & Ironing Board / Work Desk & Chair / Laptop-Sized Safe



## ROOMS

Our 100 spacious guest rooms feature Scandinavian-inspired décor, oversized windows, and ergonomic workspaces. Thoughtful amenities such as gas fireplaces and private furnished balconies with views of the Willamette River are featured in select rooms. All rooms include king beds, flat-screen TVs with premium cable, laptop-sized safes, fully stocked honor bars, Keurig™ coffee makers, and Green Natūra bath products.

## EAT & DRINK

Overlooking the scenic Willamette River, Rosswood provides a dining experience rooted in Pacific Northwest hospitality and seasonality. Designed by SERA Architects, Rosswood's atmosphere balances modern elegance with neighborhood comfort. The menu features modern American cuisine infused with subtle Mediterranean influences. Rosswood maintains close relationships with local ranchers, farmers, foragers and purveyors to source high quality ingredients that simultaneously support the local community and showcase the bountiful flavors of the Pacific Northwest.



## HOTEL AMENITIES

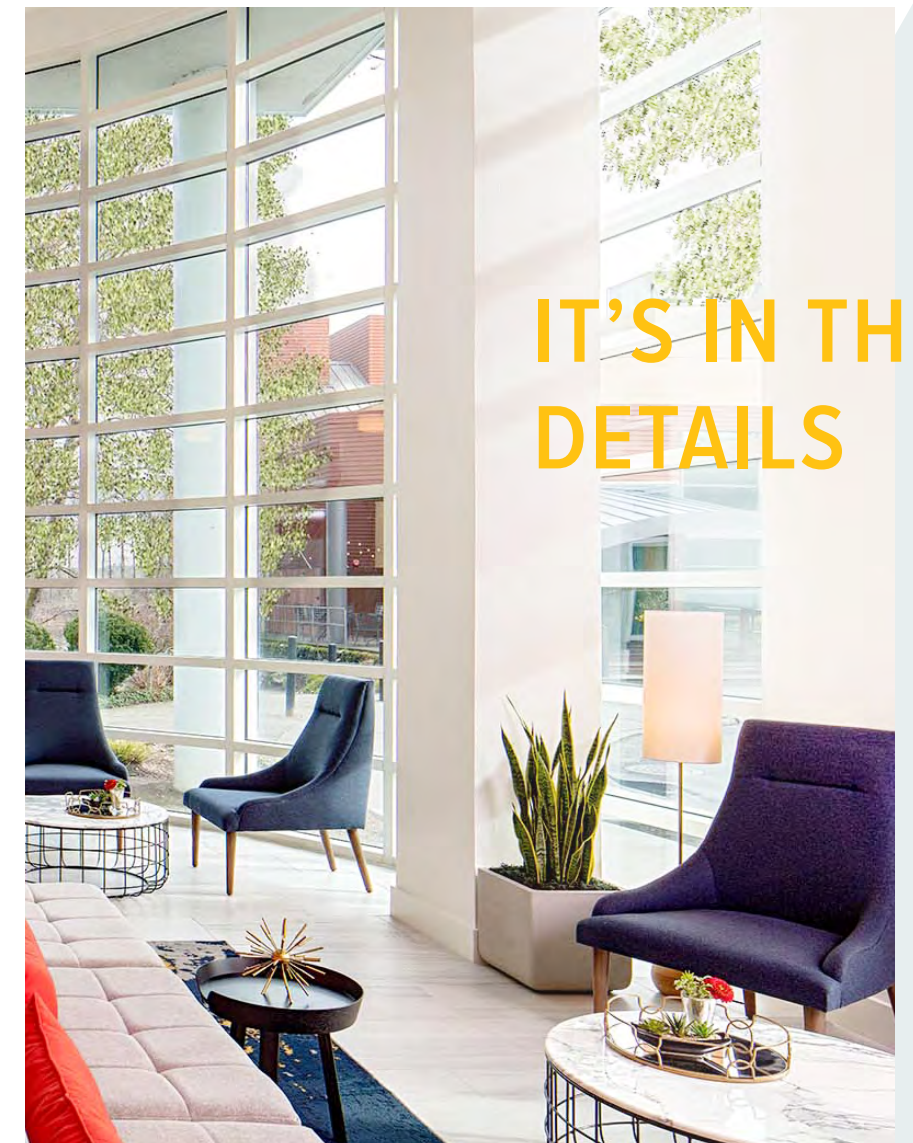
Portland's Largest Spa / Valet Parking / Pet Friendly / 24/7 Fitness Center / Business Center / Guest Access to Spa Facilities / Local Fare from Rosswood / 24/7 Coffee & Tea in Lobby / Complimentary Bike Rentals

## MEETING ROOMS

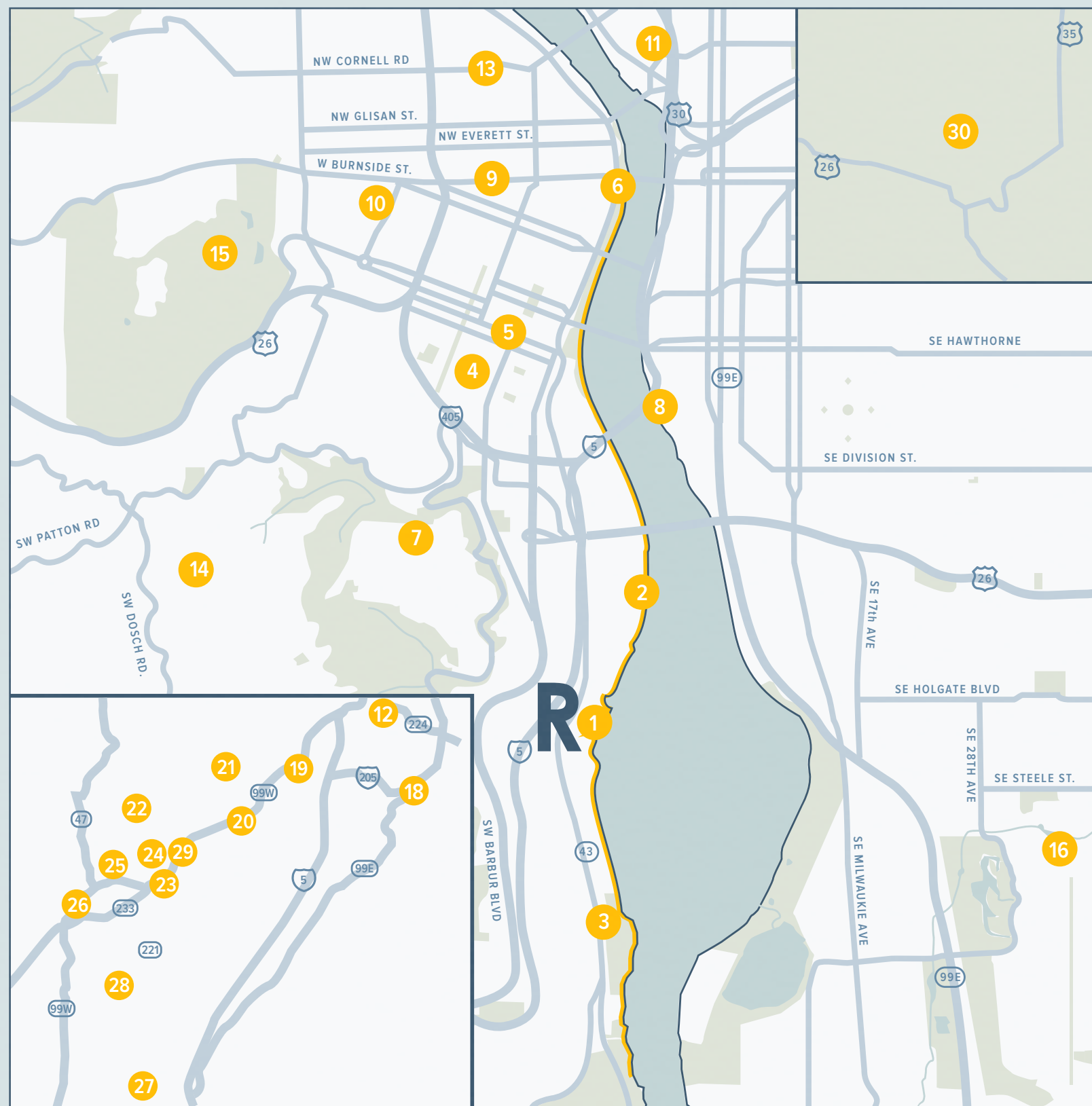
Meetings, conferences, and special occasions are made easy with our 3,000 square feet of dedicated indoor meeting space, which includes three event rooms and a boardroom that can accommodate up to 104 guests. Guests attending any event at the hotel will receive complimentary valet parking.

## SPA & FITNESS

River's Edge is home to Portland's largest spa, a 12,500 square foot sanctuary for those seeking relaxation. The spa's menu of services includes massage and body therapies, facials, manicures and pedicures that are all administered by our expert staff of therapists and estheticians. There's even a full-service hair salon and products like Éminence Organics and Farmhouse Fresh for purchase.







# GETTING AROUND

Our location on the banks of the Willamette River connects you to the best of Portland. We are a quick car ride or Max Light Rail trip from Portland International Airport, just 13 miles away. Conveniently located to public transportation, we are a short walk from the SW Lowell & Bond St stop, where you can hop on a Portland Streetcar and head Downtown. Walk or jog the Willamette Greenway Trail, which is just outside our doors. If cycling is more your speed, feel free to borrow a bike from our very own fleet.

- |    |  |    |  |
|----|--|----|--|
| 1  | The Willamette Greenway Trail              | 16 | Reed College                           |
| 2  | South Waterfront Greenway                  | 17 | NW Portland                            |
| 3  | Portland Kayak Company                     | 18 | Willamette Falls                       |
| 4  | Portland State University                  | 19 | Union Wine Co                          |
| 5  | Downtown Portland                          | 20 | Archer Vineyard, Winery & Tasting Room |
| 6  | Portland Saturday Market                   | 21 | Ponzi Vineyards                        |
| 7  | OHSU (Oregon Health & Science University)  | 22 | Penner-Ash Wine Cellars                |
| 8  | OMSI (Oregon Museum of Science & Industry) | 23 | Sokol Blosser Winery                   |
| 9  | Powell's City of Books                     | 24 | Domaine Drouhin Oregon                 |
| 10 | Providence Park (Portland Timbers)         | 25 | Anne Amie Vineyards                    |
| 11 | Moda Center (Portland Trail Blazers)       | 26 | The Eyrie Vineyards                    |
| 12 | Lewis & Clark College                      | 27 | Evesham Wood Vineyard                  |
| 13 | Pearl District                             | 28 | Brooks Wines                           |
| 14 | Council Crest Park                         | 29 | Argyle Winery                          |
| 15 | International Rose Test Garden             | 30 | Mount Hood                             |



# RIVER'S EDGE HOTEL PORTLAND

River's Edge Hotel connects you to the best of Portland, from the vibrant energy of downtown to the natural beauty of the Willamette Valley. Set near the growing South Waterfront neighborhood and convenient to downtown, we are ideally located to explore the area. Relax in rooms framed by views of the Willamette River or lush surrounding hillside. Revitalize with a nourishing treatment at Portland's largest spa or catch up with friends over locally sourced food and wine at our restaurant, Rosswood.

## OUR ROOMS

- 100 spacious guest rooms, many include balconies overlooking the Willamette River
- Rooms feature king beds, flat screen TVs with premium cable, fully stocked honor bars, Keurig™ coffee makers, and Green Natūra bath amenities

## SERVICES & AMENITIES

- Coffee & Tea offered in our Lobby and Spa
- Valet parking
- Complimentary WiFi
- In-room dining
- Pet friendly
- 24/7 Fitness Center
- Business Center
- Guest Access to Spa Facilities

## DRINK & DINE

- Perfect for any occasion, Rosswood is beloved by hotel guests and locals alike
- Our menu is designed to showcase seasonal, local Pacific Northwest ingredients

## WELLNESS

- Portland's largest spa
- Broad menu of services, including massage and body therapies, facials, and salon
- Facilities include steam room, sauna, and whirlpool
- Spa boutique featuring organic, eco-friendly products from Eminence Organics, and local products from Farmhouse Fresh
- Fully equipped fitness center with cardio and strength training equipment, daily classes, towels, and headphones

## GETTING AROUND

- Portland International Airport (PDX) within 13 miles
- Ride-sharing services such as Uber/Lyft at PDX and within Portland
- Blocks from Portland Streetcar to Downtown
- Willamette Greenway Trail
- MAX Light Rail Service
- BIKETOWN, Portland's Bike Share System
- Complimentary Bike Rentals

## NEIGHBORHOOD

### NATURE

- Waterfront Park Trail/South Waterfront Greenway
- Oregon Wine Country
- Council Crest Park
- South Waterfront Greenway
- Mount Hood
- International Rose Test Garden
- Portland Kayak Company
- Willamette Falls

### URBAN

- Downtown Portland
- Powell's City of Books
- Portland Saturday Market
- Providence Park (Portland Timbers)
- Moda Center (Portland Trail Blazers)

### EDUCATION

- OHSU (Oregon Health and Science University)
- Reed College
- Lewis & Clark College
- Portland State University



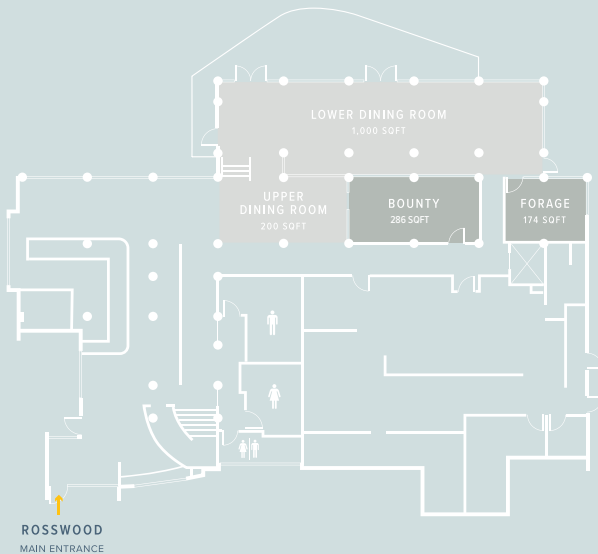


## FLOOR PLANS

River's Edge Hotel is the ideal location for hosting your next Portland meeting or event. Our 3,000 square feet of indoor space and several outdoor gathering areas overlooking the Willamette River can accommodate up to 104 guests and are in close proximity to Downtown. The hotel also features audiovisual equipment, intuitive service, seasonal Pacific Northwest cuisine and a distinct beverage program from Rosswood.



### LEVEL 1



### LEVEL 2



| ROOM NAME        | SQ. FT. | DIM. FT. | HEIGHT FT. | BANQ. | REC. | CONF.         | CLASS. | U-SHAPE | THEATER |
|------------------|---------|----------|------------|-------|------|---------------|--------|---------|---------|
| Summit           | 1050    | 30 x 31  | 7          | 56    | 60   | 24            | 36     | 21      | 56      |
| Cascade          | 707     | 23 x 31  | 7          | 32    | 30   | 18            | 24     | 18      | 48      |
| Summit & Cascade | 1757    | 53 x 31  | 7          | 104   | 125  | 42            | 60     | 30      | 120     |
| Pioneer          | 368     | 26 x 16  | 7'10"      | 16    | 15   | 12            | N/A    | N/A     | N/A     |
| Verge            | 362     | N/A      |            | N/A   | N/A  | bedroom for 8 | N/A    | N/A     | N/A     |
| Bounty           | 286     | N/A      | 7          | 16    | N/A  | 15            | N/A    | N/A     | N/A     |
| Forage           | 174     | N/A      | 8          | 12    | N/A  | 12            | N/A    | N/A     | N/A     |