

GROUND LEVEL

	AREA	L	W	H	CLASSROOM	BANQUET	RECEPTION	THEATRE	HOLLOW SQUARE	U SHAPE	CRESCENT ROUNDS	EXHIBITS 10x10
Cinema	4,153 sq. ft.			26' 2"	-	-	-	250	-	-	-	-
Screening Room	1,550 sq. ft.			11' 3"	-	-	-	56	-	-	-	-
New Fort Hall	2,876 sq. ft.	47' 5"	65' 4"		-	-	275	-	-	-	-	-

SECOND FLOOR

Champion's Boardroom	582 sq. ft.	27' 11"	21'	12' 6"	-	-	-	-	16	-	-	-
Pre-Function	1,359 sq. ft.	28' 2"	48' 2"	12' 6"	30	48	100	-	16	20	30	6
Riverdale Park	1,600 sq. ft.	28' 8"	55' 8"	12' 6"	90	133	150	175	45	45	102	6
Riverdale Park A	800 sq. ft.	28' 8"	27' 11"	12' 6"	45	66	85	85	22	22	51	-
Riverdale Park B	800 sq. ft.	28' 8"	27' 11"	12' 6"	45	66	85	85	22	22	51	-
Pre-Function	1,438 sq. ft.	16'	79' 2"	12' 6"	-	-	160	-	-	-	-	7
Humber Park	1,930 sq. ft.	34' 8"	57' 3"	12' 6"	110	160	200	210	55	55	80	8
Humber Park A	965 sq. ft.	34' 8"	28'	12' 6"	55	80	100	105	27	27	40	4
Humber Park B	965 sq. ft.	34' 8"	29' 3"	12' 6"	55	80	100	105	27	27	40	4
Coronation Park	2,609 sq. ft.	30'	87' 41"	12' 6"	150	210	275	290	75	75	126	12
Coronation Park A	877 sq. ft.	30'	29' 3"	12' 6"	50	70	90	95	25	25	42	4
Coronation Park B	871 sq. ft.	30' 2"	29' 4"	12' 6"	50	70	90	95	25	25	42	4
Coronation Park C	881 sq. ft.	30'	28' 10"	12' 6"	50	70	90	95	25	25	42	4
Coronation Park A-B	1,744 sq. ft.	30'	57' 2"	12' 6"	100	140	180	190	50	50	84	8
Coronation Park B-C	1,752 sq. ft.	30'	57'	12' 6"	100	140	180	190	50	50	84	8
Pre-Function	1,421 sq. ft.	18'	80' 4"	12' 6"	-	-	155	-	-	-	-	7

THIRD FLOOR

Victory Ballroom	6,346 sq. ft.	57' 1"	104' 6"	14' 10"	352	500	660	500	180	180	396	30
Victory Ballroom North	3,172 sq. ft.	57' 1"	52' 3"	14' 10"	175	250	330	350	90	90	198	15
Victory Ballroom South	3,172 sq. ft.	57' 1"	52' 3"	14' 10"	175	250	330	350	90	90	198	15
Pre-Function	3,682 sq. ft.	58'	30'	12' 6"	-	-	400	-	-	-	-	18
Princes' Gates Ballroom	3,578 sq. ft.	42' 8"	83' 10"	12' 6"	198	298	375	395	102	102	180	17
Princes' Gates Ballroom East	1,789 sq. ft.	42' 8"	41' 11"	12' 6"	98	150	190	195	50	50	60	9
Princes' Gates Ballroom West	1,789 sq. ft.	42' 8"	41' 11"	12' 6"	98	150	190	195	50	50	60	9
Pre-Function	1,934 sq. ft.	16"	120' 10"	12' 6"	-	-	215	-	-	-	-	9
Bow Tie Room	720 sq. ft.	28' 3"	27' 2"	10' 10"	-	-	75	-	-	-	-	-
Pre-Function	2,817 sq. ft.	51' 5"	54' 9"	12' 6"	-	-	300	-	-	-	-	14
Pearl Room	840 sq. ft.	49' 10"	14' 11"	10' 10"	-	-	85	-	-	-	-	-
Chef's Tasting	750 sq. ft.	20' 7"	36' 2"	10' 10"	-	-	75	-	-	-	-	-

OUTDOOR SPACE - SECOND FLOOR

East Terrace	2,332 sq. ft.	120' 9"	20'		-	-	245	-	-	-	-	-
---------------------	---------------	---------	-----	--	---	---	-----	---	---	---	---	---

OUTDOOR SPACE - THRD FLOOR

Marina Terrace	3,477 sq. ft.	64' 8"	53' 10"		-	-	360	-	-	-	-	-
Princes' Gates Balcony	995 sq. ft.	49' 9"	20'		-	-	105	-	-	-	-	-
Victory Balcony	1,176 sq. ft.	71' 8"	16' 5"		-	-	80	-	-	-	-	-

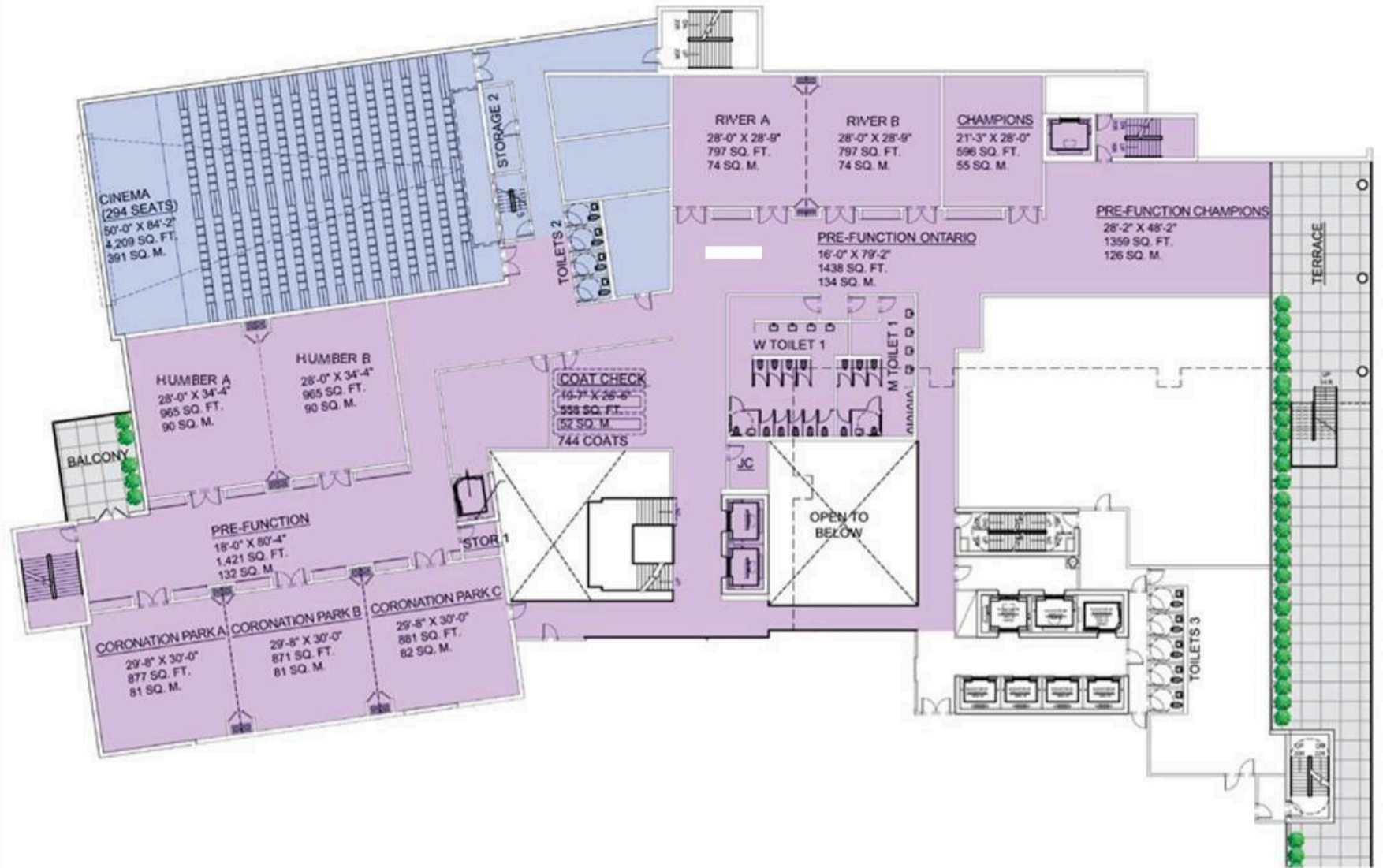
OUTDOOR SPACE - FOURTH FLOOR

High Park Terrace	6,966 sq. ft.	104' 4"	64' 6"		-	-	730	-	-	-	-	-
--------------------------	---------------	---------	--------	--	---	---	-----	---	---	---	---	---

ROOF TOP

The View	1,662 sq. ft.	28' 8"	55' 8"	14' 10"	90	133	150	175	45	45	102	6
-----------------	---------------	--------	--------	---------	----	-----	-----	-----	----	----	-----	---

SECOND FLOOR



THIRD FLOOR



HOTEL X TORONTO

111 Princes' Boulevard
Toronto, ON, M6K 3C3

Celso Thompson

Director of Sales
and Marketing

416-649-8765

Celso@HotelXToronto.com

WWW.HOTELXTORONTO.COM

